

Together, Better, Smarter, Safer: Planning for a Healthy Community

New Partners for Smart Growth Conference

William Lyons
USDOT/Volpe National
Transportation Systems
Center

February 15, 2014



Agenda

FHWA research on Transportation Planning and Healthy Communities by USDOT/Volpe Center

- ❑ Metropolitan Area Transportation Planning for Healthy Communities white paper
 - ❑ Focus on Metropolitan Planning Organizations (MPOs)
- ❑ Statewide Transportation Planning white paper
 - ❑ Focus on DOTs

Purpose

- ❑ Identify best practices, challenges, and opportunities for integrating health into transportation planning
- ❑ Context for case study presentations
- ❑ Food for thought:
 - ❑ Opportunities going forward to bring health into transportation decisions



Context for white papers

- ❑ Who and why?
- ❑ What do we mean by health?
- ❑ What do we mean by transportation planning?
- ❑ Where were the case studies?
- ❑ What are we learning?
- ❑ What did we conclude and what questions remain?



Who, What, Why?

□ Audience

- Metropolitan planning organizations
- State Departments of Transportation
- Other “Partners”
 - Traditional: State, regional, local transportation
 - Non-traditional: State and local health organizations, among others
- FHWA and other Federal staff



Statewide and Metro Planning Framework

- ❑ Focus on:
 - A “3-C” Planning Process
 - Continuing, Cooperative, Comprehensive
 - Strategic planning
 - Performance of multimodal system
 - Intermodal planning
 - Products of the process
- ❑ Long Range Plan (SLRTP or MTP)
 - Strategic thinking – 20+ year horizon
 - “Vision” and scenarios for region
 - Critical choices and trade-offs
- ❑ 4 year investment program (TIP or STIP)
 - Links Long Range Plan strategies to decisions
 - Focus on implementation
- ❑ Emerging emphasis on performance-based planning
 - Performance management
 - Monitoring

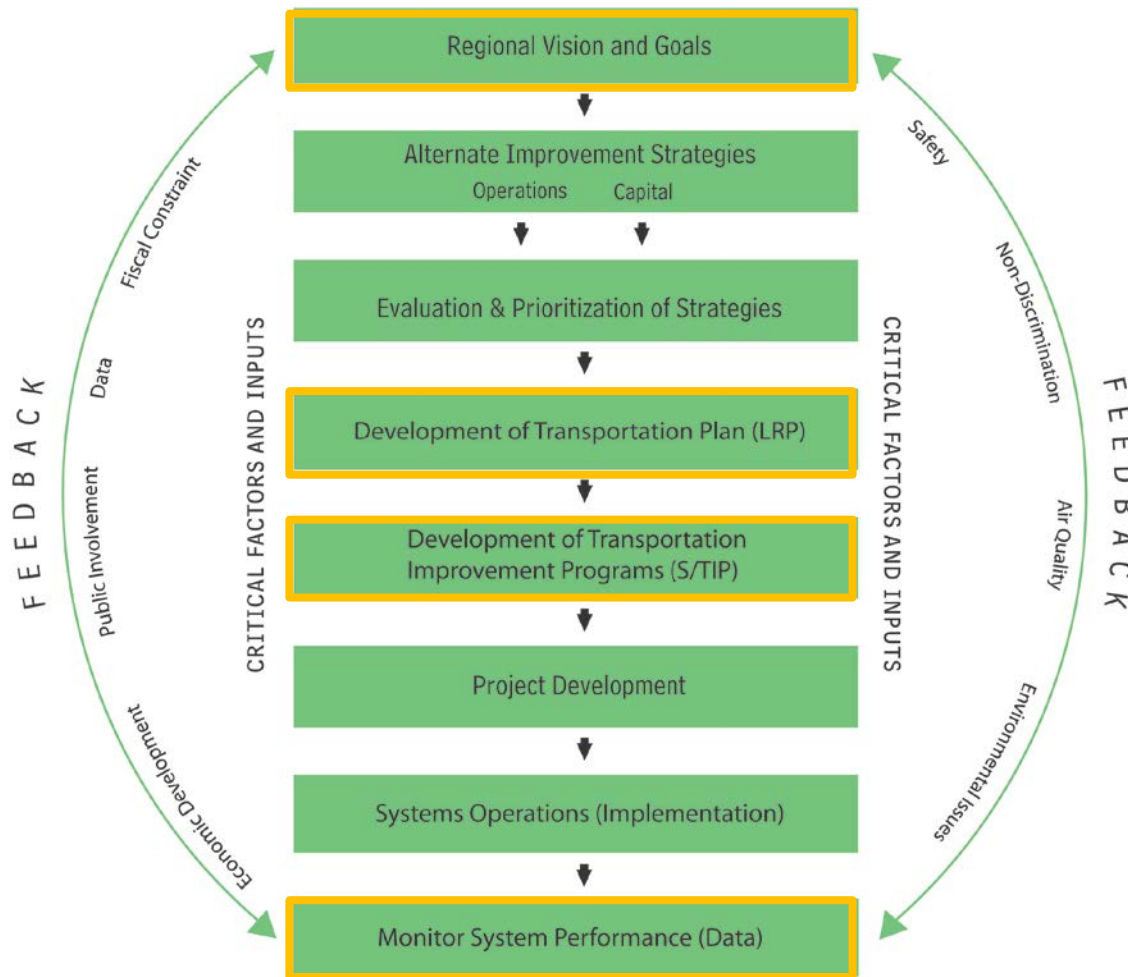


What do we mean by transportation planning?

Metropolitan Area	Statewide
Metropolitan Planning Organization (MPO)	State Department of Transportation (DOT)
Metropolitan Transportation Plan (MTP)	Statewide Long Range Transportation Plan (SLRTP)
Transportation Improvement Program (TIP)	Statewide Transportation Improvement Program (STIP)



What do we mean by transportation planning?

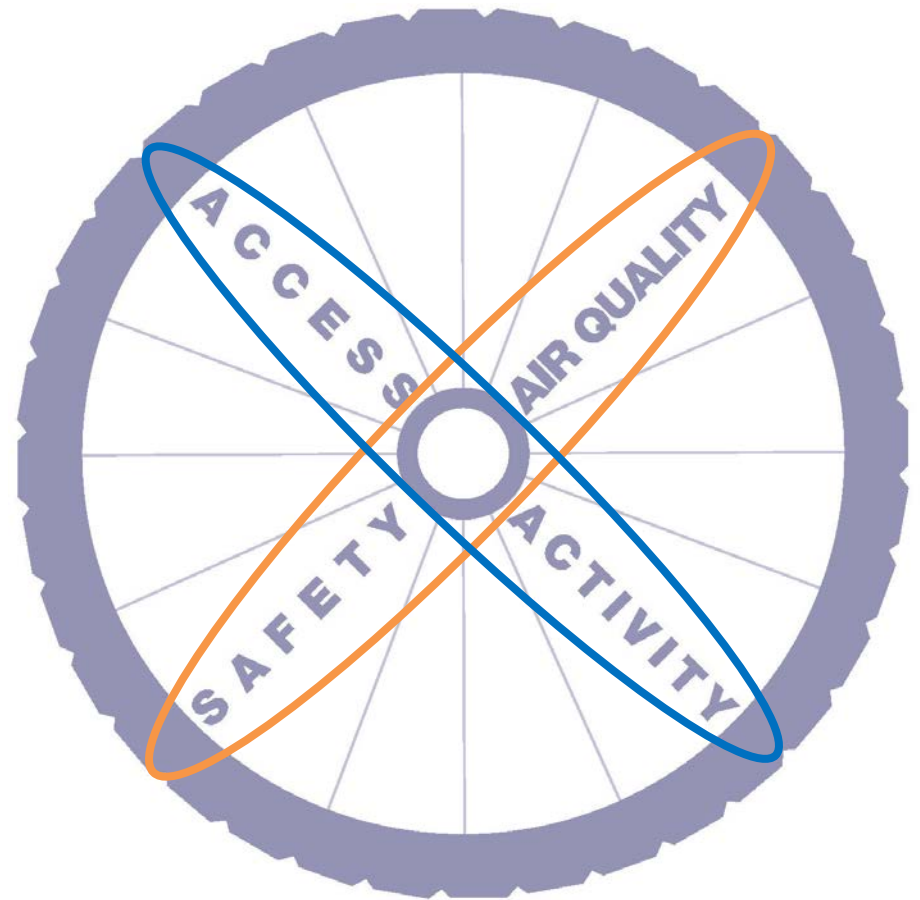


Source: FHWA/FTA Transportation Planning Process: Key Issues

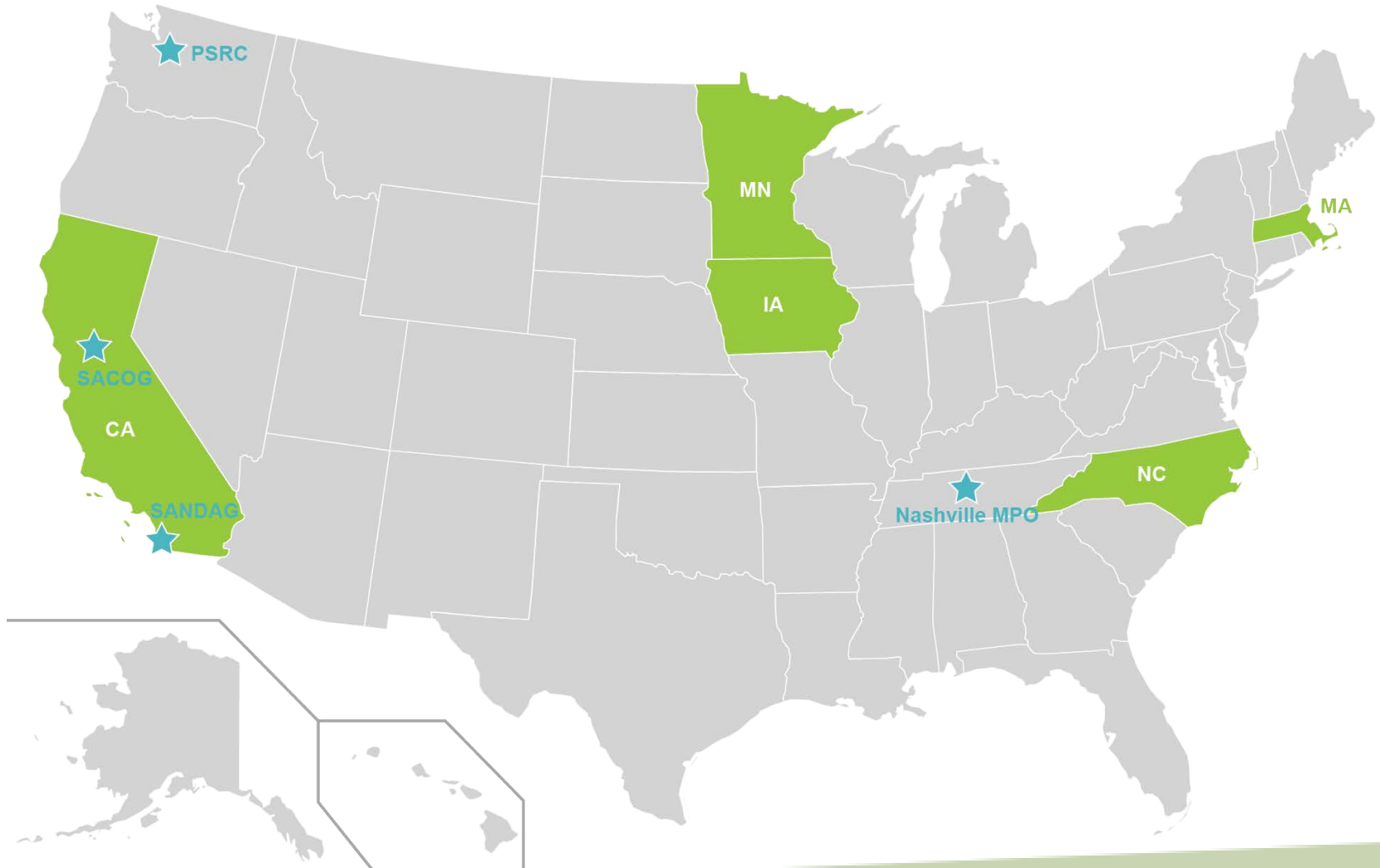


What do we mean by consideration of health?

- ❑ Holistic and comprehensive
- ❑ “Traditional” and “emerging”
- ❑ Explicit
- ❑ Forward-looking



Where were the case studies?



Where were the case studies?

MPOs	DOTs
<ul style="list-style-type: none">❑ Nashville MPO❑ Puget Sound Regional Council❑ Sacramento Area Council of Governments❑ San Diego Association of Governments	<ul style="list-style-type: none">❑ California (Caltrans)❑ Iowa (Iowa DOT)❑ Massachusetts (MassDOT)❑ Minnesota (MnDOT)❑ North Carolina (NCDOT)

❑ Criteria:

- Type and breadth of health-related activities
- Leadership and partnerships
- Institutionalization of health considerations into plans and programs
- Geographical diversity



MPO Case Studies - Framework

**transportation
planning process**

**regional goals
and vision**

**long-range
transportation
plan**

**project
selection**

**performance
monitoring**

MPO Case Studies - Framework



MPO Case Studies - Framework



MPO Case Studies - Framework



DOT Case Studies - Framework

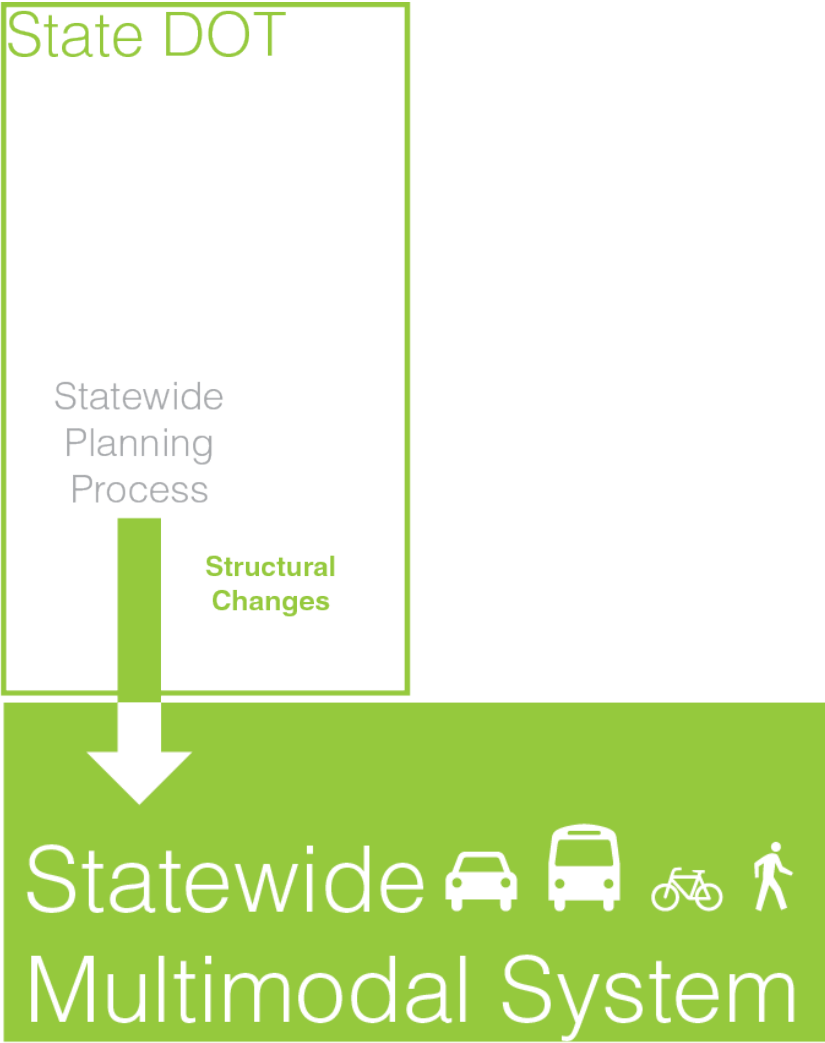


Image Credits--Executive and Legislature: Michal Beño, from The Noun Project; Public Health, Environment, Schools: OCHA AVMU; Land Use/Econ Dev:Pete Fecteau, from The Noun Project; Rural Planning: Evan Caughey, from The Noun Project; Municipalities: Thibault Geffroy, from The Noun Project;

DOT Case Studies - Framework

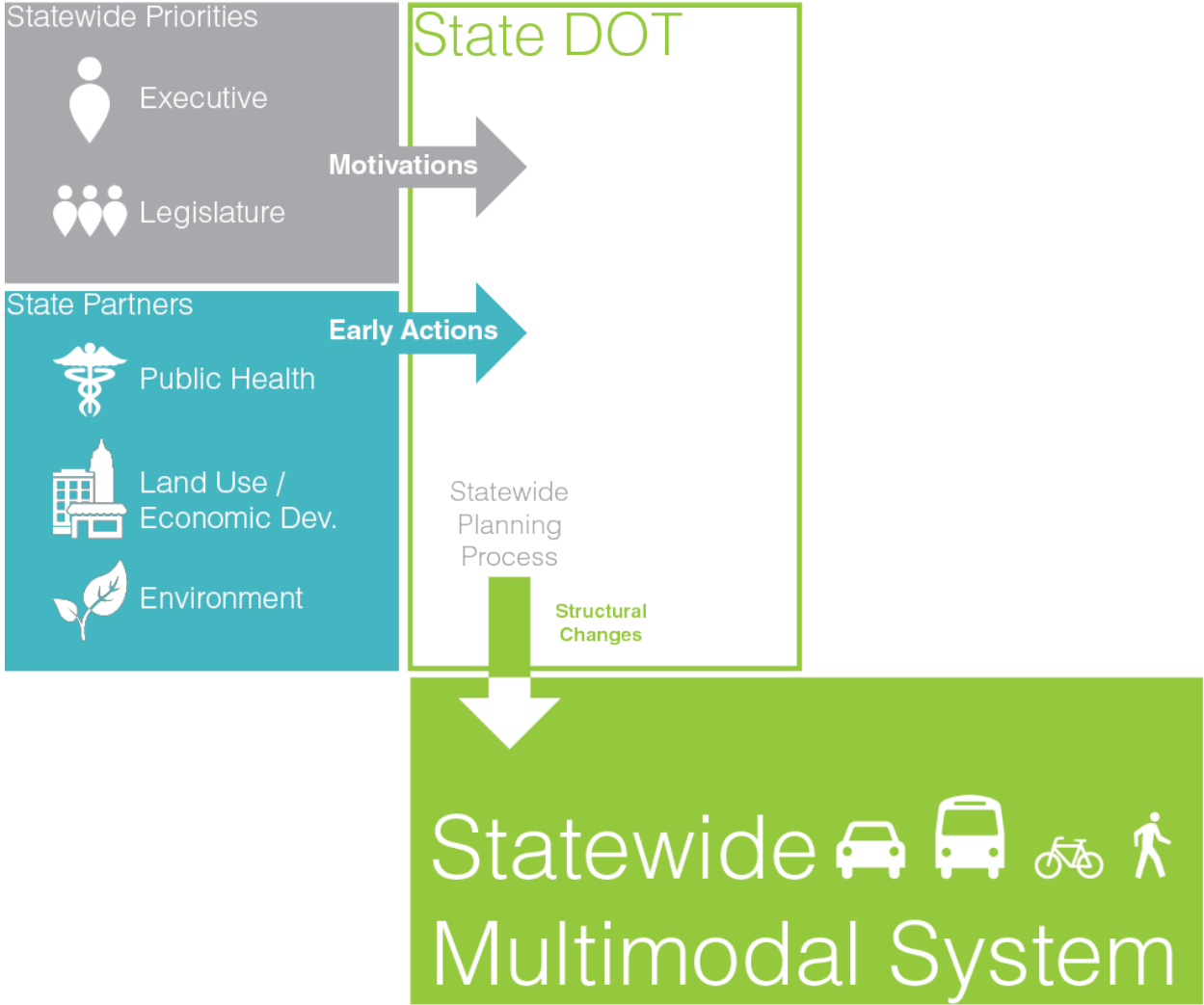


Image Credits--Executive and Legislature: Michal Beño, from The Noun Project; Public Health, Environment, Schools: OCHA AVMU; Land Use/Econ Dev:Pete Fecteau, from The Noun Project; Rural Planning: Evan Caughey, from The Noun Project; Municipalities: Thibault Geffroy, from The Noun Project;

DOT Case Studies - Framework

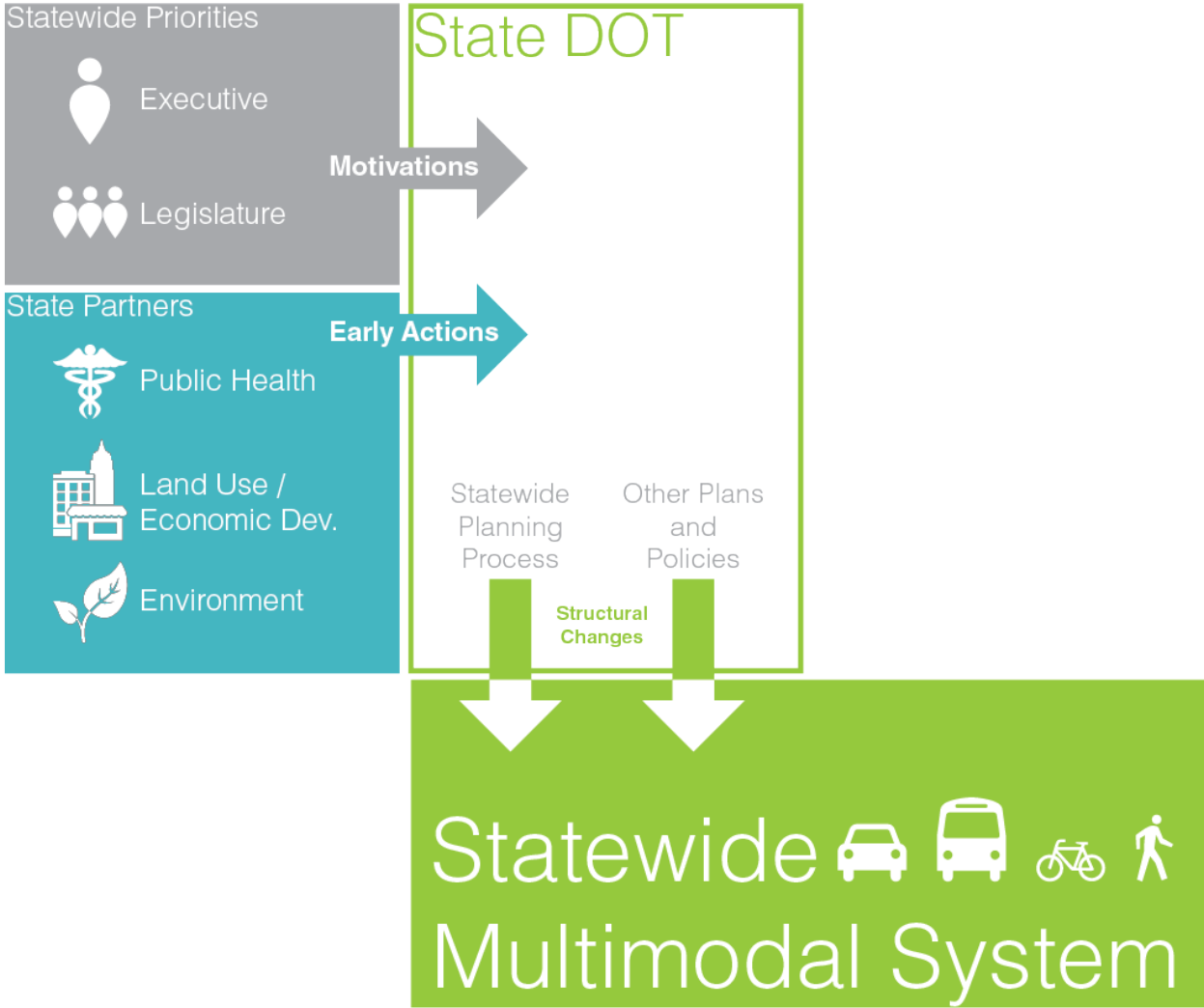


Image Credits--Executive and Legislature: Michal Beño, from The Noun Project; Public Health, Environment, Schools: OCHA AVMU; Land Use/Econ Dev:Pete Fecteau, from The Noun Project; Rural Planning: Evan Caughey, from The Noun Project; Municipalities: Thibault Geffroy, from The Noun Project;

DOT Case Studies - Framework

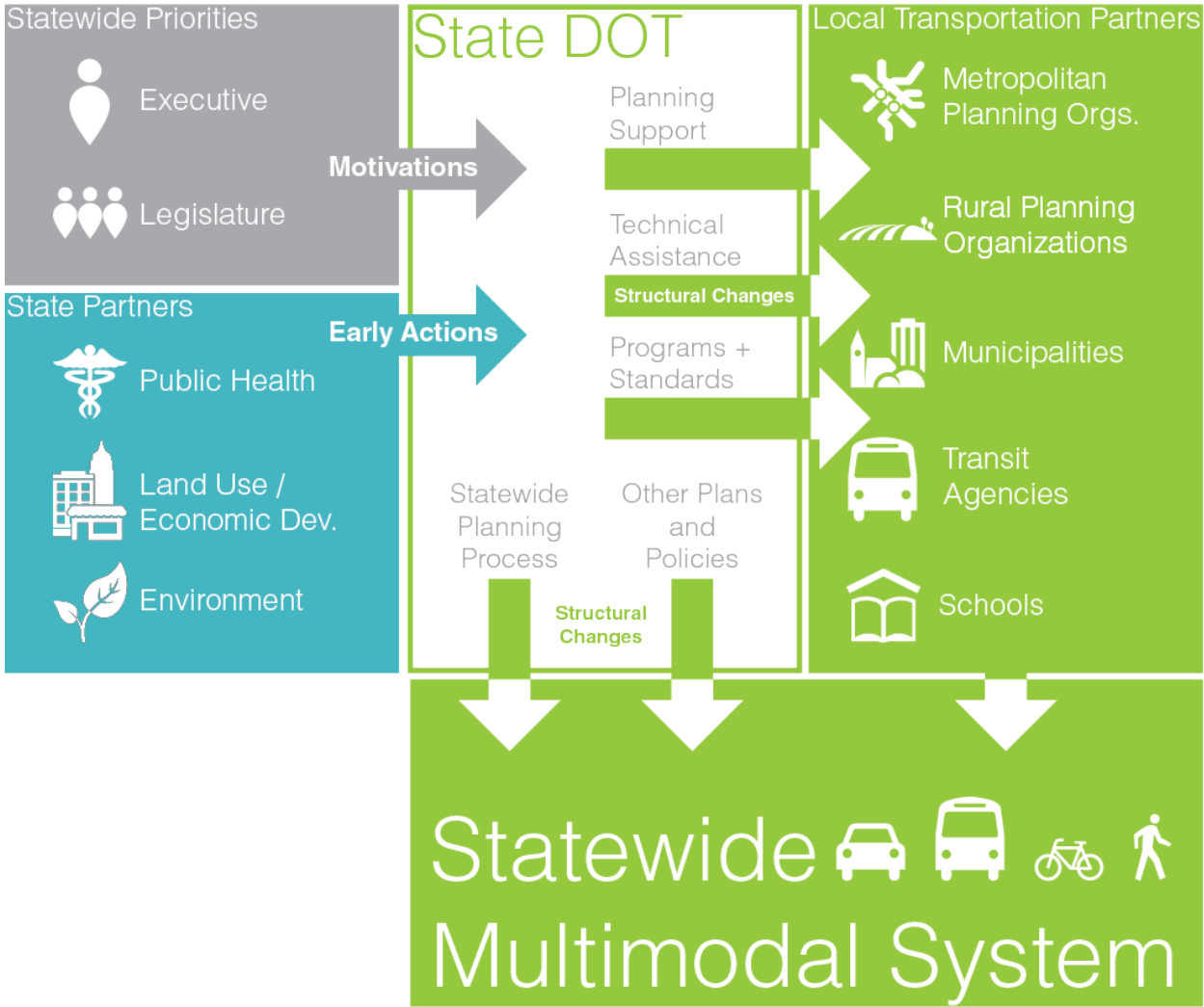


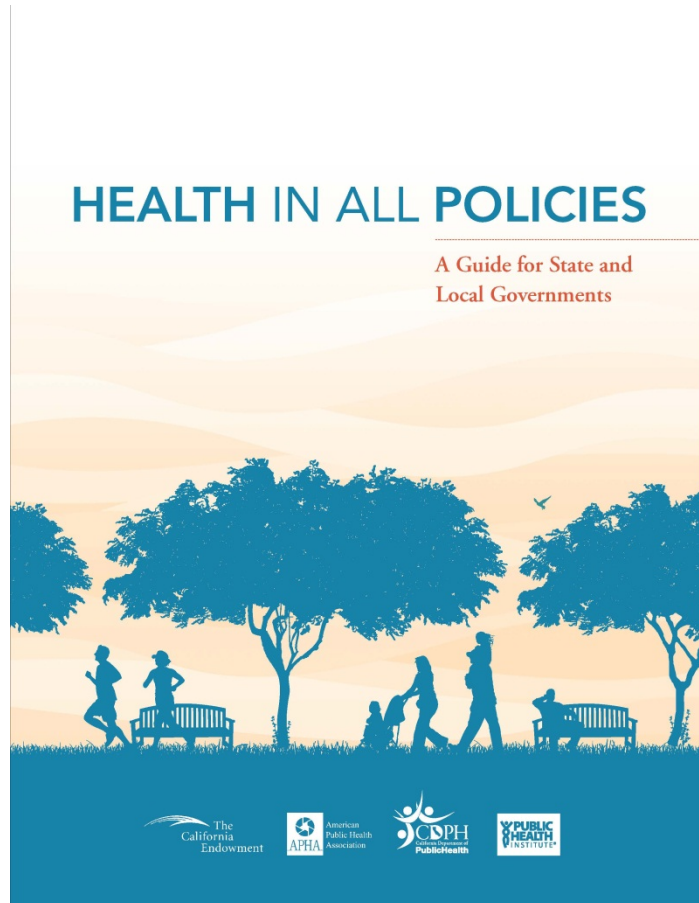
Image Credits--Executive and Legislature: Michal Beño, from The Noun Project; Public Health, Environment, Schools: OCHA AVMU; Land Use/Econ Dev:Pete Fecteau, from The Noun Project; Rural Planning: Evan Caughey, from The Noun Project; Municipalities: Thibault Geffroy, from The Noun Project;

Motivations

MPOs	DOTs
National priorities and programs	
State government	
Local government, community interest	Other State agencies
Board	Executive level
Partnerships with public health agencies	
Research and analysis	
Staff	



Motivations



<http://www.phi.org/resources/?resource=hiapguide>



<http://www.healthyworks.org>



<http://www.eatwellplaymoretn.org/>



Early Actions

MPOs	DOTs
Partnerships	
Informal participation by public health partners	Relationship with State health department
Federal grant programs/projects	
Documentation of health-transportation connection	Research studies
Programs	
Research and analysis	Health or sustainability initiatives
	Application to specific areas – healthcare access, active transportation, smart growth, climate change, SRTS, Complete Streets



Early Actions

Middle Tennessee Transportation and Health Study



[Welcome](#) | [About the Study](#) | [Invited to Join?](#) | [Report Travel](#) | [FAQs](#) | [Materials](#) | [Contact Us](#)

Step 1

Invited to join? Complete a Household Questionnaire.
[Start Here](#)

Step 2

Record your travel on your assigned day using your travel log.
[Learn More...](#)

Step 3

After your travel date, please report your travel information.
[Report Travel](#)

Step 4

If selected, complete the additional Health Survey.
[Take Health Survey](#)

Welcome! The Middle Tennessee Transportation and Health Study is sponsored by the Nashville Metropolitan Planning Organization, the Clarksville Urbanized Area Metropolitan Planning Organization, and the Tennessee Department of Transportation. If you have received a participation letter, please [Start Here](#) to begin the survey.

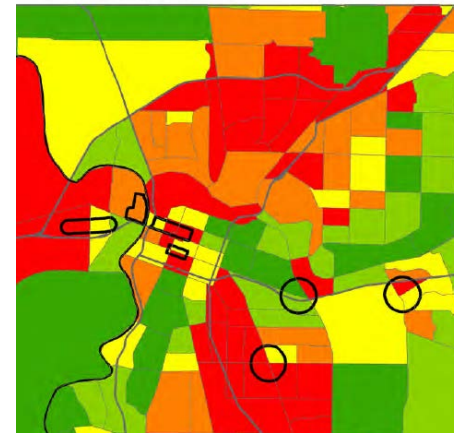




Every day, thousands of people move through the middle Tennessee region—in cars, on buses, by foot, on bikes. To plan for the projects of *tomorrow*, we need to understand how you travel *today*. Your participation in this important survey will help improve the future of transportation for all of us.

www.middletnstudy.com

Vulnerability Index



<http://www.sacog.org/sustainable/>

Sustainability through healthy community design




<http://www.kingcounty.gov/transportation/HealthScape.aspx>

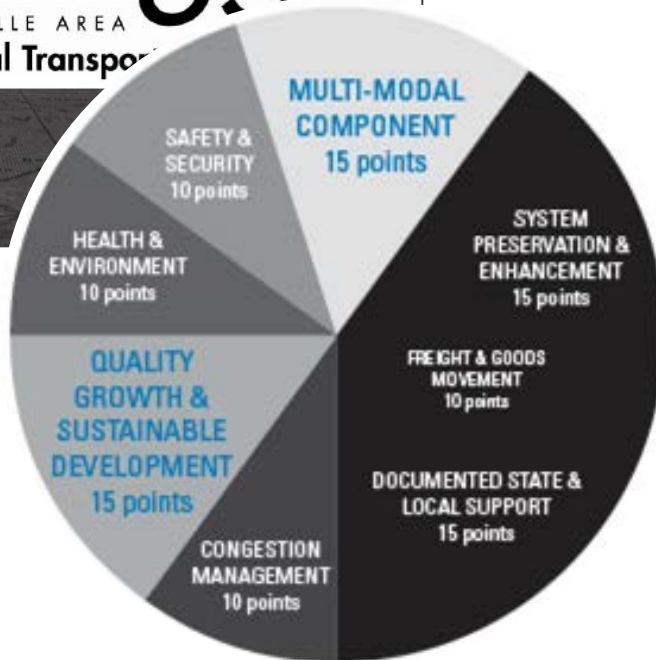


Structural Changes

MPOs	DOTs
Vision or MTP goals	Integration into plans/documents other than SLRTPs/TIPs
TIP project selection criteria	
Performance monitoring	
Staff capacity	Technical assistance to local governments
Health-related technical and advisory committees	
Formal membership by health partners	
Tools and analyses (e.g., HIAs)	



Structural Changes



Nashville MPO



<http://psrc.org/growth/vision2040>



Where are the opportunities?

- ❑ Incremental / evolving
 - ❑ Value of best practices
 - ❑ Forward-thinking
 - ❑ Explicit
 - ❑ Comprehensive: air quality, safety, **activity, equity**
- ❑ Evolving partnerships
- ❑ Data, tools, performance measures
 - ❑ Share transportation and health data
 - ❑ MAP-21: encouragement of performance-based planning
 - ❑ Emerging tools (e.g., WHO HEAT, Woodcock/ITHIM)
 - ❑ Proposed Phase 3 white paper: data and implementation



Contact Information

- ❑ FHWA-Volpe Transportation Planning and Healthy Communities Research
 - Fred Bowers, FHWA project manager: Frederick.Bowers@dot.gov
 - William M. Lyons, Volpe Center project manager: william.lyons@dot.gov
 - “Metropolitan Area Transportation Planning for Healthy Communities”
http://www.planning.dot.gov/healthy_communities_desc.asp
- ❑ Statewide Transportation and Healthy Communities,” report to be posted at:
http://www.planning.dot.gov/healthy_communities_desc.asp
- ❑ Webinar on white papers, with MPO case studies
<https://connectdot.connectsolutions.com/p7zv88li7jx/>

